

A top-down view of a workspace on a light-colored wooden desk. In the center is a silver laptop with a Windows 10 desktop background. To the top left is a white computer mouse. Below the mouse is a red fabric bag. To the right of the laptop is a silver stapler. In the bottom left corner, there is a green folder resting on a stack of papers. A dark grey curved shape is visible in the bottom right corner of the image.

VFI

Microsoft Philanthropies TEALS Program

Contact
us about
TEALS!



Andrea Russo

Regional Manager Lead, East Region

Andrea.Russo@Microsoft.com

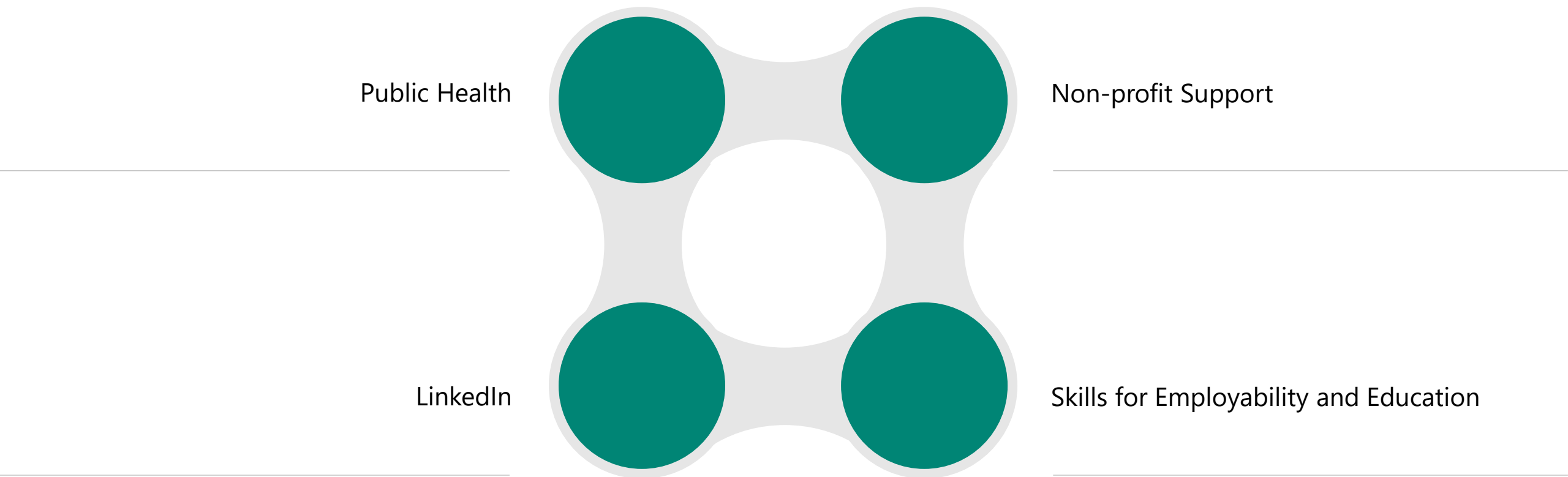


Aimee Rosato

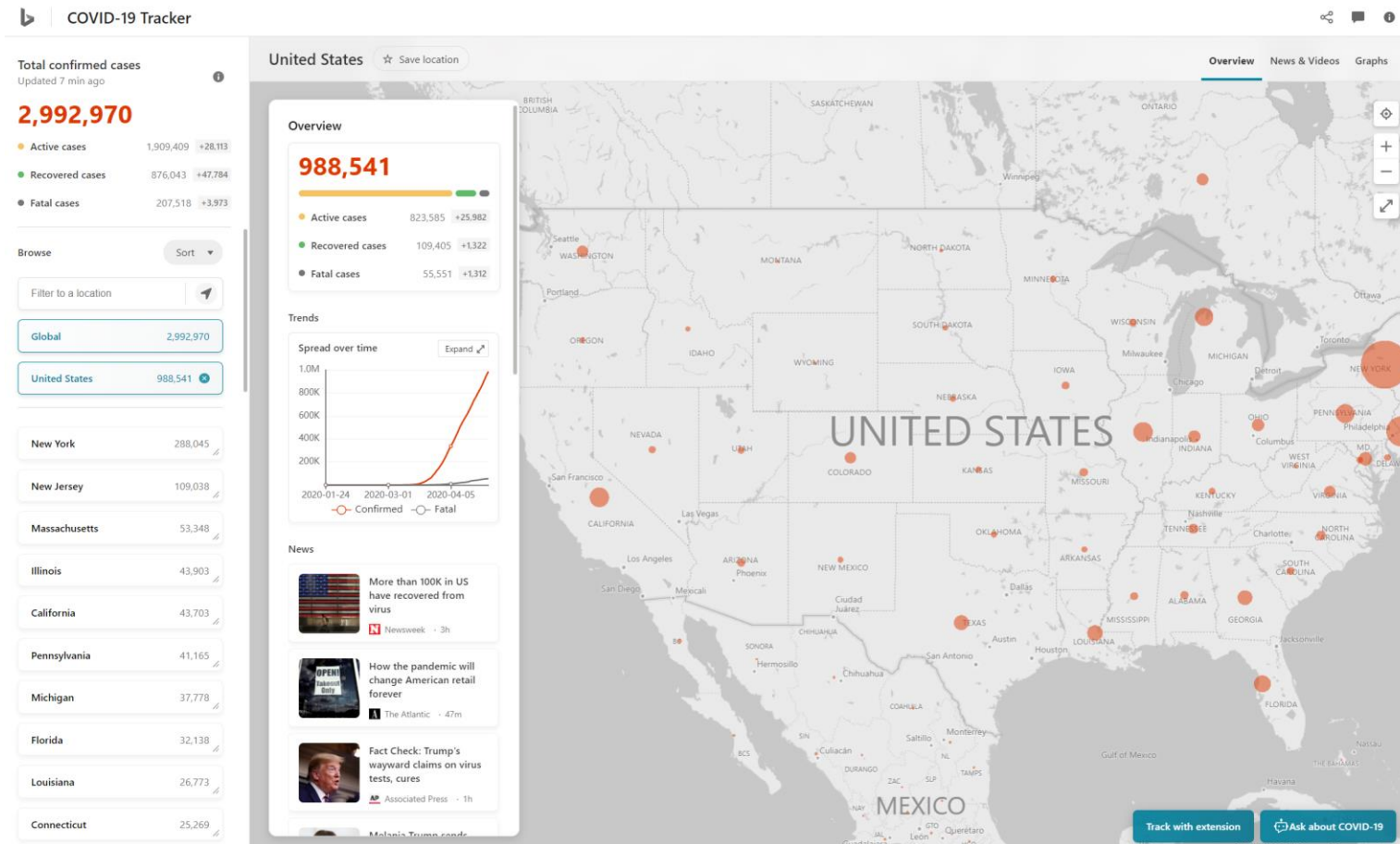
Associate RM Lead, NY/NJ Region

Aimee.Rosato@Microsoft.com

Microsoft's Philanthropic Response



Supporting Public Health – Fighting COVID-19



- COVID-19 Tracker using realtime data
 - bing.com/covid
- Microsoft Healthcare Bot
 - [CDC Chatbot](#)
 - [International](#)
- Device donation to healthcare providers first

Support for Non-profits



- Provide with tools for remote work
- Remain connected to volunteer base
- Funding: MSFT grants supporting operational costs

LinkedIn



Navigating coronavirus:
We're In It Together

When a community comes together, opportunity is created. Whether you're in need of a new job, looking for critical talent to join your team, or searching for advice to help you navigate the changing world of work, we're here to help connect you to the right information and resources.

Find a job

Many organizations are actively hiring for immediately available positions. Search LinkedIn for your next opportunity.

[Explore jobs](#)



- [Coronavirus Resource Hub](#)
 - Providing 3 months of free job posting and Talent Insights
 - Healthcare
 - Clinics
 - Essential workplaces
- [LinkedIn Learning](#)
 - Helping navigate job market + upskill
- [Recruiting for Good](#)
 - Helping orgs fill critical roles to fight COVID-19

TEAMS



- We offer discounted and free offers for Office 365 and Microsoft 365 which include services like Word, PowerPoint, Excel, Outlook, OneDrive and Teams:
- • For smaller organizations, get Office 365 Business Essentials or Microsoft 365 Business
- • For larger organization, get Office 365 E1
- Workshops/ Trainings Available

Supporting Virtual Graduations



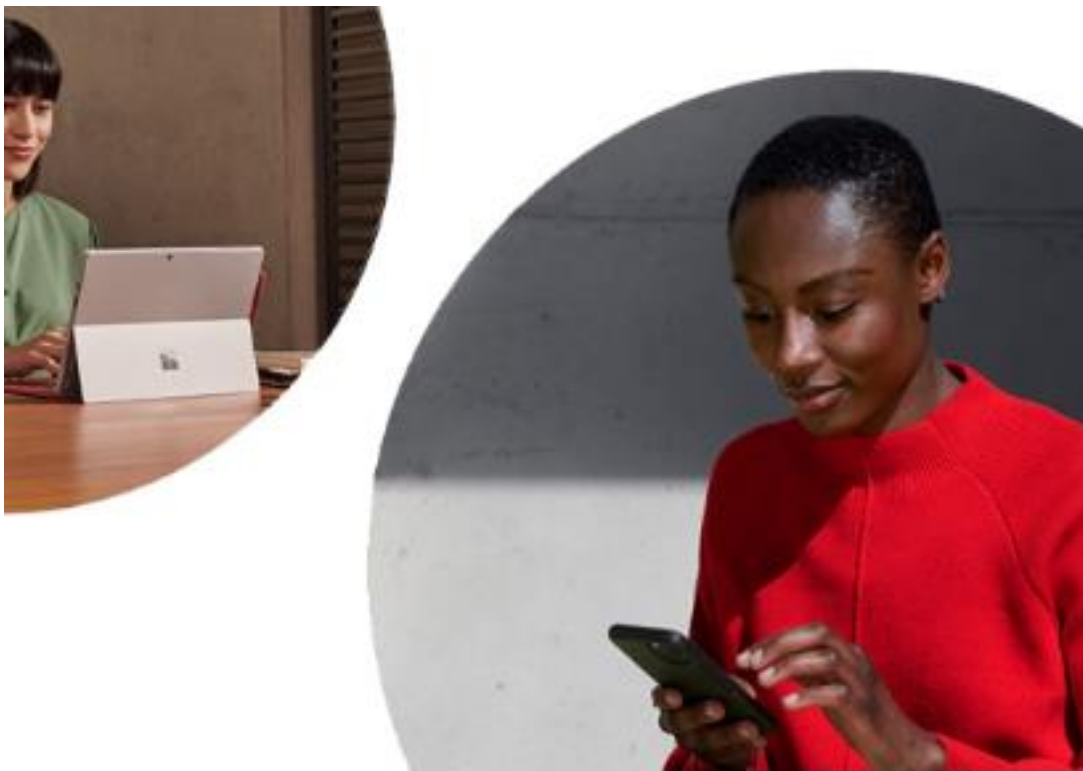
TEAMS Live Events is enabling larger private and public events – up from a max of **10,000 now up to 100,000** –

TEAMS is a great choice for any Virtual Graduations being contemplated.

- Use **Microsoft Teams for EDU Scenarios**
FlipGrid [K12](#); [Hi-Ed](#) for all students to 'walk'

MSFT Stores

Free Virtual Workshops for Educators, Students & Businesses



April 30, 2020

Virtual Workshop - Make your Life More Creative, Organized and Secure with Microsoft 365

During this virtual workshop, you will learn how a Microsoft 365 subscription can help you run your life li

[See more event details >](#)

Virtual Office Hours for Microsoft Teams for Educators

We will be providing virtual personalized guidance and support to help you meet your education needs .

[See more event details >](#)

Virtual Workshop - Microsoft Innovative Educator: OneNote Class Notebook

OneNote Class Notebook provides a platform for teachers to prepare instructional materials and collabo

[See more event details >](#)

Virtual Workshop for Students - The Smithsonian National Museum of Natural History's "Hall of Fossi

Travel millions of years to the past without leaving your home. In this workshop, students ages 8+ are i

[See more event details >](#)



Microsoft Philanthropies

TEALS Program

Computer science in
every high school



Remote Teaching

TEALS Rural and Distance program has reached students that have the least access to expertise in computer science since 2012. Leveraging a proven virtual classroom 150+ courses will be supported remotely this year.

What Types of Schools:

- Schools in rural areas
- Communities with limited local technology professionals
- Inner-city schools in metro areas where commutes impact volunteer availability

How to Prepare:

- Sufficient bandwidth, headsets, and webcams to connect students with volunteers
- TEALS training for teachers and their teaching teams to prepare for remote instruction
- Enlist a partner IT liaison for initial installation and ongoing support

How it Works:

- Students and teacher log into virtual classroom
- Volunteers lead interactive instruction during the class period
- During lab time, volunteers meet 1:1 with students

- **Guidelines and Best Practices:** [Best Practices Remote Instruction](#)



Thomas Jefferson High School in Los Angeles, California

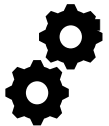
Microsoft Airband US response to the COVID-19 crisis



Keep Americans Connected Pledge: FCC Chairman Pai invited all ISPs to join the Keep Americans Connected Pledge, committing to maintaining connectivity to customers who are economically impacted by the crisis. To date, nine Airband ISP Partners have signed the Pledge. All Airband Partners are committed to serving their communities by maintaining connectivity for existing customers and connecting new subscribers.



Hotspots: Practicing social distancing. The Airband team has procured Wi-Fi equipment to donate to ISP Partners in support of these efforts. These hotspots will support education and telemedicine applications in Airband communities.



TVWS equipment: Furthermore, the Airband team is funding and procuring Television White Space (TVWS) radios to enable our partners to deploy Wi-Fi hotspots in locations not easily reached with other technologies.



Expanded digital skills offerings: Making sure our rural communities have access to vital resources to support learning and employability is a top priority. We are developing COVID-19 specific digital skills offerings for rural communities, including free resources to support virtual learning and engagement.



Promoting the Airband ISP program: We are also activating over 400 participating companies in the Airband ISP Program, a free initiative providing benefits to ISPs serving rural areas. Offerings include special pricing on TV

🖱️ Respond at **PollEv.com/andrearusso235**

 Text **ANDREARUSSO235** to **22333** once to join, then text your message

Visual settings

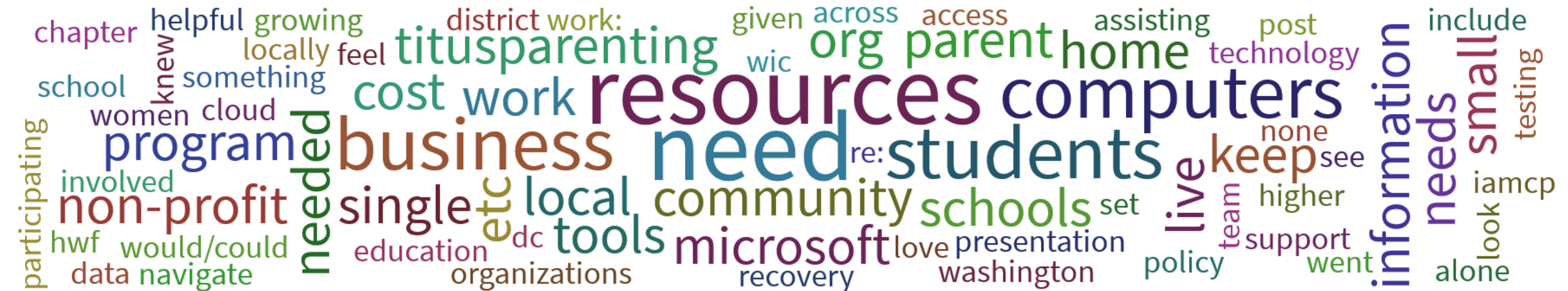
Activate

Show responses

Lock

Clear responses

what information and/or resources related to COVID-19 would be helpful to you and your work? Please include your city and state.



Challenge Access to Devices



Questions and Answers



Call to Action – Donate your devices today

- Non-profit e-cycler in Seattle area
- Bulk donations from partners or significant individual donors
 - Refurbish
 - → go directly back to community
 - → go back to students in districts
 - EDU partners?
 - Working across districts and states – ID where digital divides are
 - What we can and can't do
 - Propose – no PII of students – ship to districts
 - Title 1/underserved districts
 - Supply of devices
 - Depends on partners stepping up and saying, yes, I have 20-30 devices
 - Can track metrics on front and backend
 - How many donated / how many are useable



Educational Resources

- **Blog:** [How schools can ramp up remote learning programs quickly with Microsoft Teams](#)
- **Docs:** [Get started with Microsoft Teams for remote learning](#)
- **Blog:** [Microsoft extends access to Minecraft: Education Edition and resources to support remote learning - New!](#)
 - [Minecraft Toolkit](#)
- **Docs:** [Educator and Student Support](#)
- **Docs:** [Parent Support](#)
- **MEC Course:** [Getting Started with Online Learning in Office 365](#)
- **Asset:** [Microsoft Teams for EDU Quick Start Guide](#)
- **Asset:** [Remote Learning Wakelet](#)
- **Webinars:** [Teams EDU Remote Learning Webinars](#)
(On-demand & upcoming series)
- **Microsoft Teams for EDU Scenarios FlipGrid** [K12](#); [Hi-Ed](#)

Covid 19 Impact



"To steer the global response, UNESCO announced the creation of a UNESCO-COVID19 Emergency Task Force that will support national responses and **share effective policy responses** with a focus on the most vulnerable countries. A wider community of practice will be established to **enhance knowledge sharing**, peer learning and capacity building on distance and open learning. UNESCO aims to mobilize all actors involved, including the private sector. Partners such as **Microsoft** have already lent technical support to the Task Force."

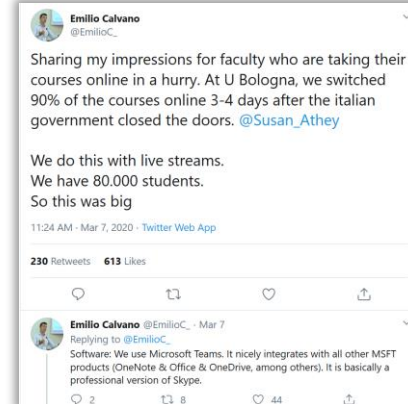
"An impressive 89 percent of students agreed that Teams has helped them build connections with other students. This is a huge improvement on the engagement rates with our previous collaboration tools."

—Nick Bohannon: Principal Lecturer in Mental Health Nursing
University of Central Lancashire

"I'm delighted that students and staff right across the University are working together to reach their potential and make a difference, supported by this leading collaboration technology."

—Professor Chris Day: Vice-Chancellor and President
Newcastle University

"Modern learning cannot be confined to the classroom and it is more important than ever to empower our teachers to continuously guide and nurture students during this difficult time," said **Mr Kenneth Cheng, Principal of Christian & Missionary Alliance Sun Kei Primary School**



Christian and Missionary Alliance
Sun Kei Secondary School



University of Bologna

Reference guide

COVID-19 Outbreak Dashboard Singapore, March 19, 2020

<https://co.vid19.sg/dashboard>

COVID-19 Workforce Considerations

<https://www.pwc.com/us/en/library/covid-19/assets/covid-19-workforce.pdf>

John

Hopkins Mapping <https://gisanddata.maps.arcgis.com/apps/opsdashboard/index.html#/bda7594740fd40299423467b48e9ecf6>

WHO Situation Report, March 19, 2020

https://www.who.int/docs/default-source/coronaviruse/situation-reports/20200318-sitrep-58-covid-19.pdf?sfvrsn=20876712_2